

# Characteristics of CLL in Senegal

Clinical features, cytology,  
Immunophenotype, cytogenetic  
abnormalities and altered  
expression of microRNA

M. Raphaël, A. Sall Fall, T.  
NDiaye Dieye, F. Samba, S.  
Diop, C Mathiot, CH Gattoliat, E.  
May, J. Wiels, A. Toure

Cheikh Anta Diop University,  
Dakar, CNRS 8126, IGR, Institut  
Curie, Paris-Sud University  
Alliance Mondiale contre le  
Cancer AMCC, Institut National  
du Cancer, INCa, ALIAM



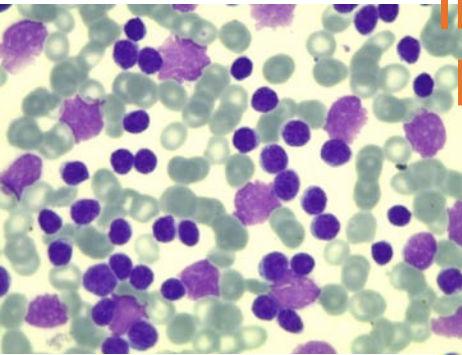
EP 5.1



# Characteristics of CLL in Senegal

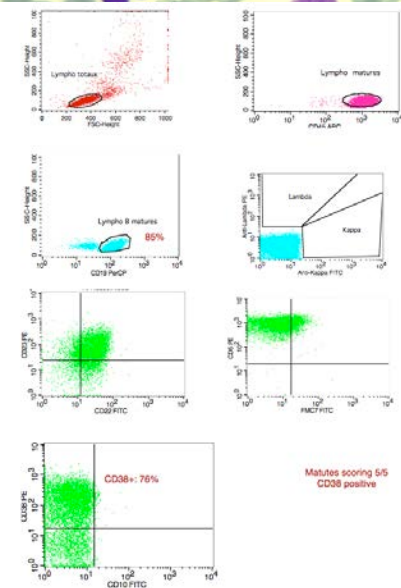
## Clinical features, cytology, Immunophenotype

- 33 cases, mean age: 62 years, range [47-80]
- High Lymphocytosis: 9-840 G/L
- Clinical Binet Staging: 24 stage C, 4 stage B and 5 stage A



## Immunophenotype Matutes scoring

- 30 pts : 4-5/5
- 3 patients: 3/5 atypical CLL



## CD38:

- Positive : 26 pts
- Negative : 7 pts
- Worse pronostic factor

# Characteristics of CLL in Senegal

Cytogenetic abnormalities and altered expression of microRNA

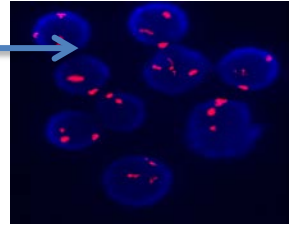
**Cytogenetic, FISH:** 25 pts

11 pts 44%, del of 13q

9 pts : trisomy 12

2 pts: del 11q (ATM)

2 pts: del 17p (TP53)



6 pts: 2 simultaneous lesions

Decreased expression of **5**

**miRNAs (tumor suppressor) :**

**15a, 16-1, 181a, 181b, 34a,**

analyzed by TaqMan miRNA qRT-PCR in 25 pts.

- **Aggressiveness of CLL in Senegal** : CD38+, del11q23, del

17p13), low expression of miRNA  
Delay of the diagnosis or de novo aggressive CLL ?

- Such study is a model of capacity building for diagnosis and research in the country